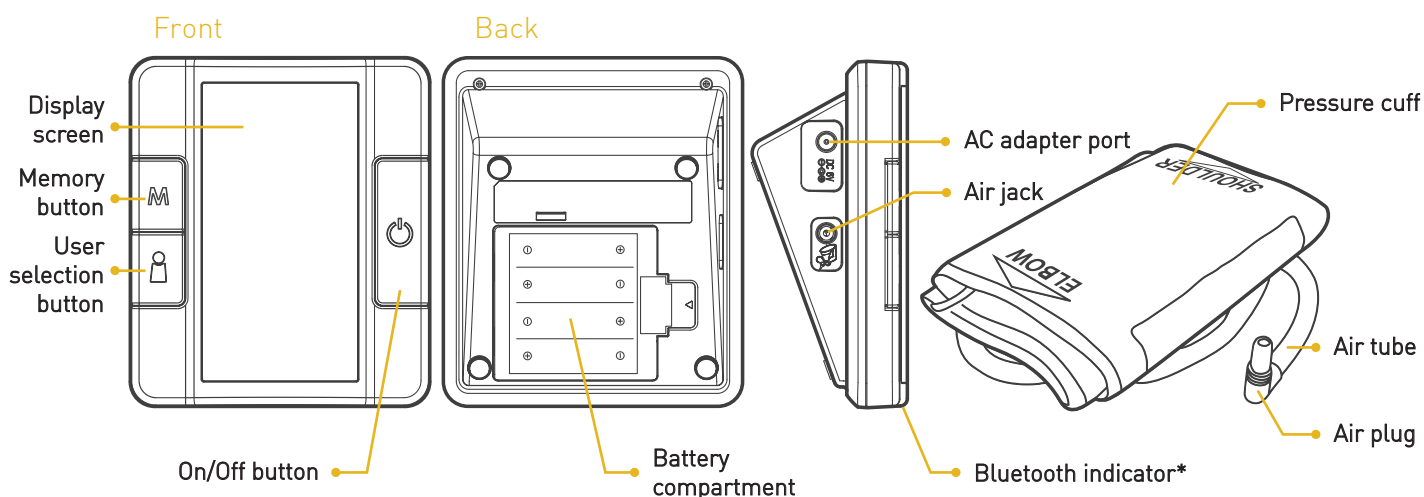
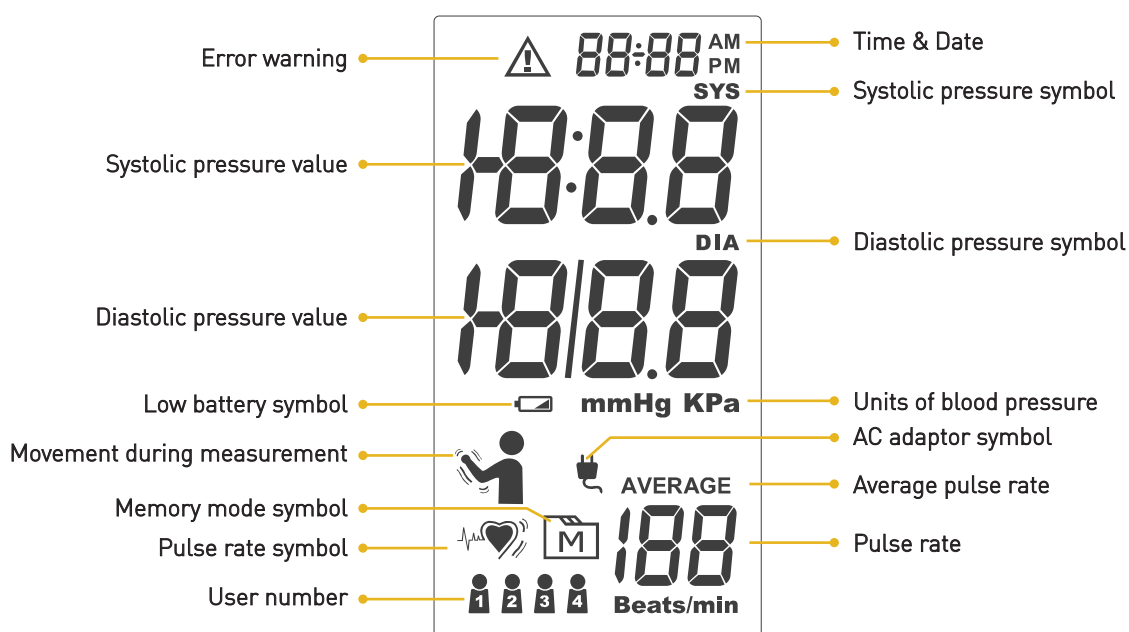


## APPEARANCE



## DISPLAY SCREEN



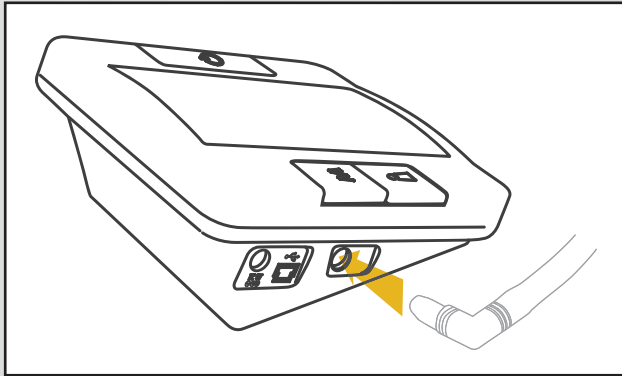
## ORDERING INFORMATION

No. 1735-BT	ri-champion® <b>smartPRO+</b> Bluetooth with adult cuff W (Wide 24 - 43 cm)
No. 1735	ri-champion® <b>smartPRO</b> with adult cuff W (Wide 24 - 43 cm)
No. 1736-BT	ri-champion® <b>smartPRO+</b> Bluetooth with adult cuff S (Small 15 - 24 cm)
No. 1736	ri-champion® <b>smartPRO</b> with adult cuff S (Small 15 - 24 cm)
No. 12633	Adult cuff W (Wide 24 - 43 cm)
No. 12632	Adult cuff S (Small 15 - 24 cm)
No. 12631	AC Adapter

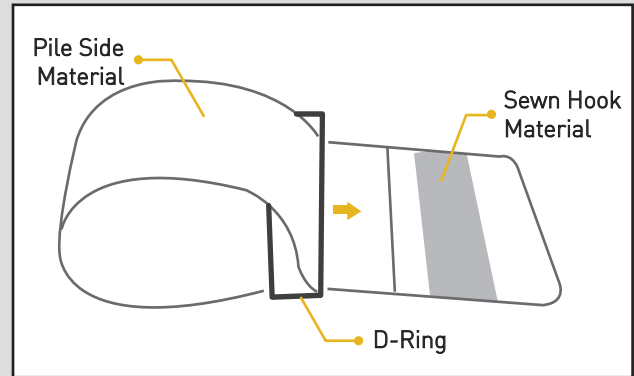
\* ri-champion® smartPRO+ only (No.: 1735-BT and 1736-BT).

## USING THE DEVICE

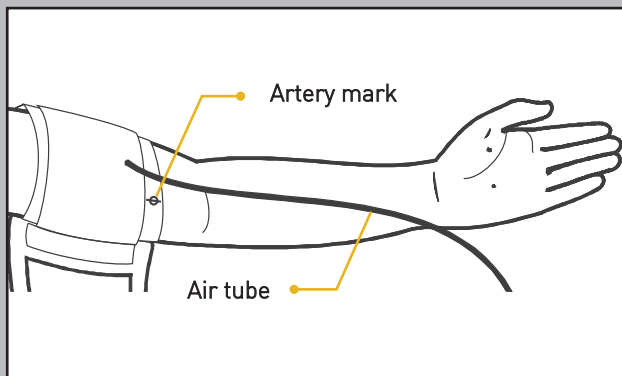
### Fitting The Cuff Properly



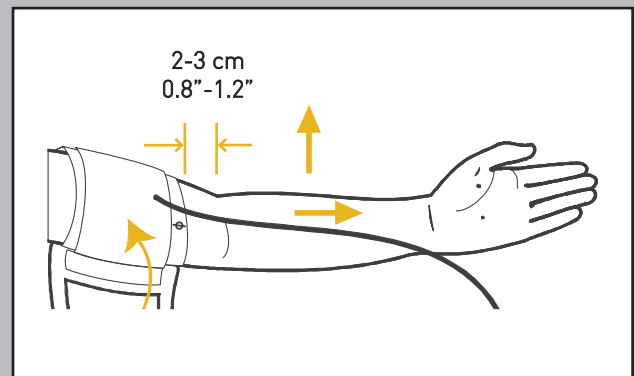
**STEP 1.** Connect the air plug of the tubing to the air jack of the meter.



**STEP 2.** Assemble the cuff as shown. Place the cuff rough side down, so the smooth side is facing up. Pick up the 'Index' labelled end and pull it through the D-ring. The cuff is now ready to use.

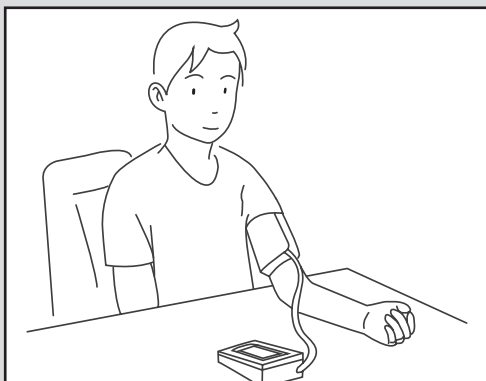


**STEP 3.** Clothing must not restrict the arm, remove all clothing covering the measurement arm. Stretch your left (or right) arm in front of you with your palm facing up. Slide and place the cuff onto your upper arm above your elbow with the air tube and artery mark towards the lower part of your arm. Inside the cuff there are labels indicating 'shoulder' and 'elbow' to ensure it is put on the right way.



**STEP 4.** Start to tighten the cuff, the bottom edge of the cuff should be approx. 2 to 3 cm above your elbow. Leave a little free space between the arm and the cuff, you should be able to fit two fingers between them. Wrap the hook material over the pile side material and press firmly to secure the cuff. The top and bottom edges of the cuff should be tightened evenly around your upper arm.

### Proper Measurement Position



**STEP 1.** Sit down for at least 10 minutes before measuring.

**STEP 2.** Place your elbow on a flat surface. Relax your hand with the palm facing up.

**STEP 3.** Make sure the cuff is about the same height as the location of your heart. Press . Remain still and do not talk or move during the measurement.

**STEP 4.** Measurement is in progress. After the meter is turned on, the cuff will begin to inflate automatically.

#### **WARNING**

If the cuff is relatively lower (or higher) than the heart, the obtained blood pressure value could be higher (or lower) than the actual value. A 15 cm difference in height may result in an error around 10 mmHg.

Please visit **riester.de** for more information



Refer to instructions for use for full functional usage

**Rudolf Riester GmbH** P.O. Box 35 | Bruckstraße 31 | 72417 Jungingen | Germany  
Tel.: (+49) 7477-9270-0 | Fax.: (+49) 7477-9270-70 | info@riester.de | www.riester.de

